

MLS Area 2

Residential Statistics



August 2021

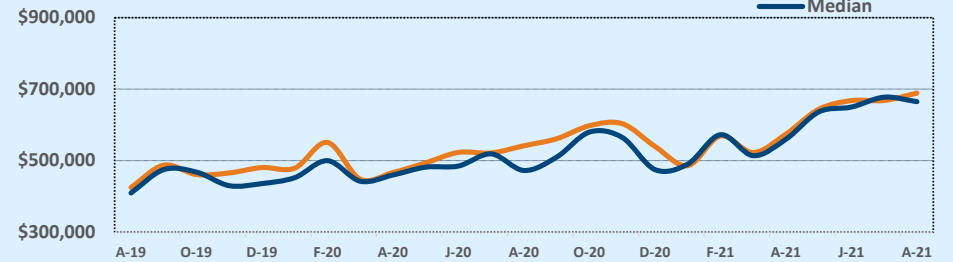
Listings	This Month			Year-to-Date		
	Aug 2021	Aug 2020	Change	2021	2020	Change
Single Family Sales	47	43	+9.3%	278	295	-5.8%
Condo/TH Sales	10	13	-23.1%	126	105	+20.0%
Total Sales	57	56	+1.8%	404	400	+1.0%
New Homes Only	3	6	-50.0%	35	46	-23.9%
Resale Only	54	50	+8.0%	369	354	+4.2%
Sales Volume	\$39,273,955	\$30,336,580	+29.5%	\$249,397,670	\$203,268,923	+22.7%
New Listings	65	55	+18.2%	466	508	-8.3%
Pending	5	65	-92.3%	10	431	-97.7%
Withdrawn	5	10	-50.0%	27	45	-40.0%
Expired	2	1	+100.0%	5	22	-77.3%
Months of Inventory	0.6	1.1	-46.3%	N/A	N/A	--

Price Range	This Month			Year-to-Date		
	New	Sales	DOM	New	Sales	DOM
\$149,999 or under	--	--	--	--	1	169
\$150,000- \$199,999	--	--	--	17	14	22
\$200,000- \$249,999	3	3	7	38	40	13
\$250,000- \$299,999	1	1	5	17	15	17
\$300,000- \$349,999	1	3	7	6	12	9
\$350,000- \$399,999	2	--	--	13	12	24
\$400,000- \$449,999	6	3	6	22	12	6
\$450,000- \$499,999	7	1	39	46	25	32
\$500,000- \$549,999	7	5	13	39	39	8
\$550,000- \$599,999	3	5	19	51	30	14
\$600,000- \$699,999	17	10	9	75	59	15
\$700,000- \$799,999	12	11	12	66	58	17
\$800,000- \$899,999	2	5	6	29	43	9
\$900,000- \$999,999	1	3	15	9	11	10
\$1M - \$1.99M	3	7	13	36	32	8
\$2M - \$2.99M	--	--	--	2	1	4
\$3M+	--	--	--	--	--	--
Totals	65	57	11	466	404	14

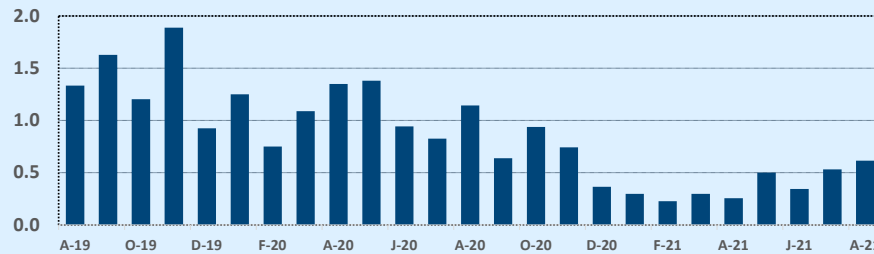
Average	This Month			Year-to-Date		
	Aug 2021	Aug 2020	Change	2021	2020	Change
List Price	\$666,368	\$538,830	+23.7%	\$577,723	\$507,722	+13.8%
List Price/SqFt	\$436	\$338	+29.0%	\$400	\$338	+18.4%
Sold Price	\$689,017	\$541,725	+27.2%	\$617,321	\$508,172	+21.5%
Sold Price/SqFt	\$451	\$341	+32.4%	\$428	\$339	+26.3%
Sold Price / Orig LP	102.4%	99.5%	+2.9%	106.3%	99.2%	+7.2%
Days on Market	11	18	-36.4%	14	23	-35.9%

Median	This Month			Year-to-Date		
	Aug 2021	Aug 2020	Change	2021	2020	Change
List Price	\$650,000	\$465,000	+39.8%	\$560,000	\$475,000	+17.9%
List Price/SqFt	\$415	\$339	+22.4%	\$393	\$334	+17.6%
Sold Price	\$665,000	\$472,500	+40.7%	\$600,000	\$475,500	+26.2%
Sold Price/SqFt	\$443	\$335	+32.3%	\$412	\$339	+21.5%
Sold Price / Orig LP	101.0%	99.5%	+1.5%	104.0%	100.0%	+4.0%
Days on Market	6	5	+20.0%	5	7	-28.6%

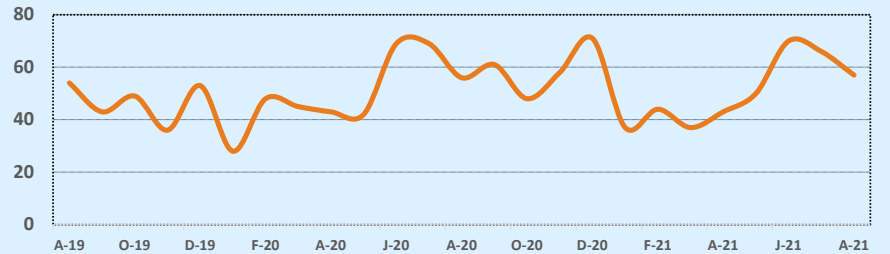
Average & Median Sales Price - Last Two Years



Months of Inventory - Last Two Years



Number of Sales - Last Two Years



Based on information from the Austin Board of REALTORS® (alternatively, from ACTRIS). Neither the Board nor ACTRIS guarantees or is in any way responsible for its accuracy. The Austin Board of REALTORS®, ACTRIS and their affiliates provide the MLS and all content therein "AS IS" and without any warranty, express or implied. Data maintained by the Board or ACTRIS may not reflect all real estate activity in the market.